



M3 Floor Sweeper Assemble Instruction

STEP 1 Install the front glass



② Hexagon screws M8*35 (2pcs)



① Go through the headlight line



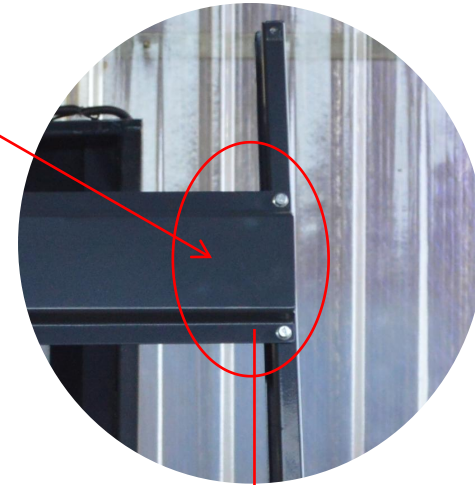
③ Plug it in

STEP 2 Install the support frame



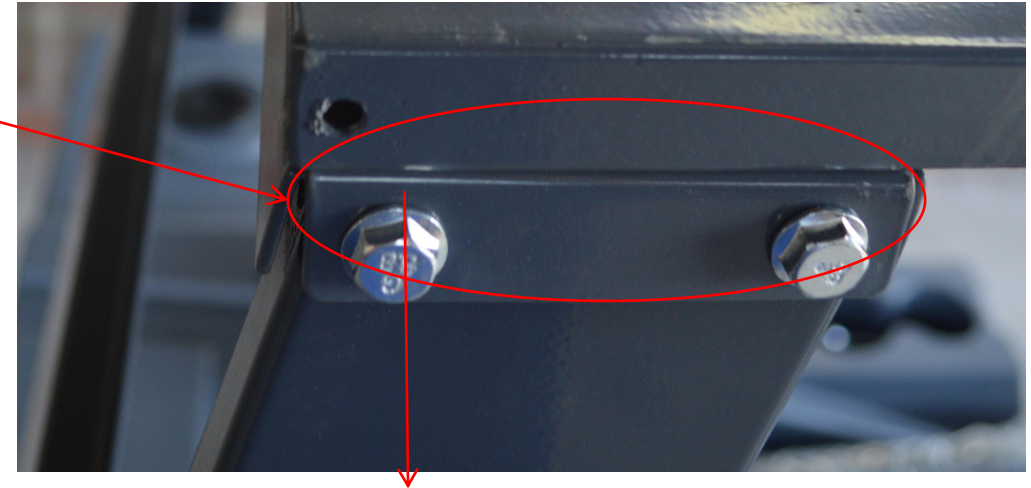
Flanged screws M8*20
(4pcs each side)

STEP3 Install the bracket fixing plate



Flanged screws M6*12 (4pcs in total)

STEP 4 Install the back mounting plate for the ceiling



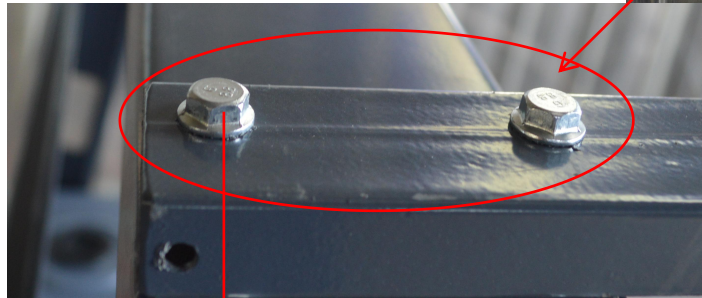
Flanged screws M6*12 (2pcs each side)

STEP 5 Install connecting R-plate

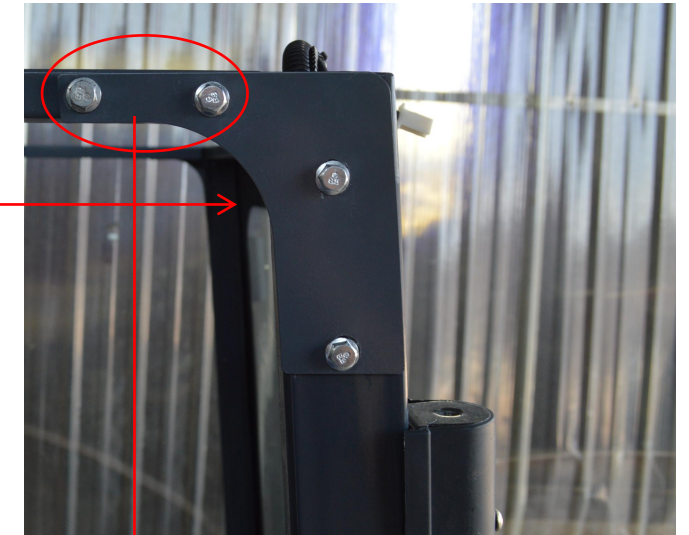


Flanged screws M6*12

STEP 6 Install the ceiling fixing pipe



Flanged screws M6*25



Flanged screws M6*12

STEP 7 Install headlights



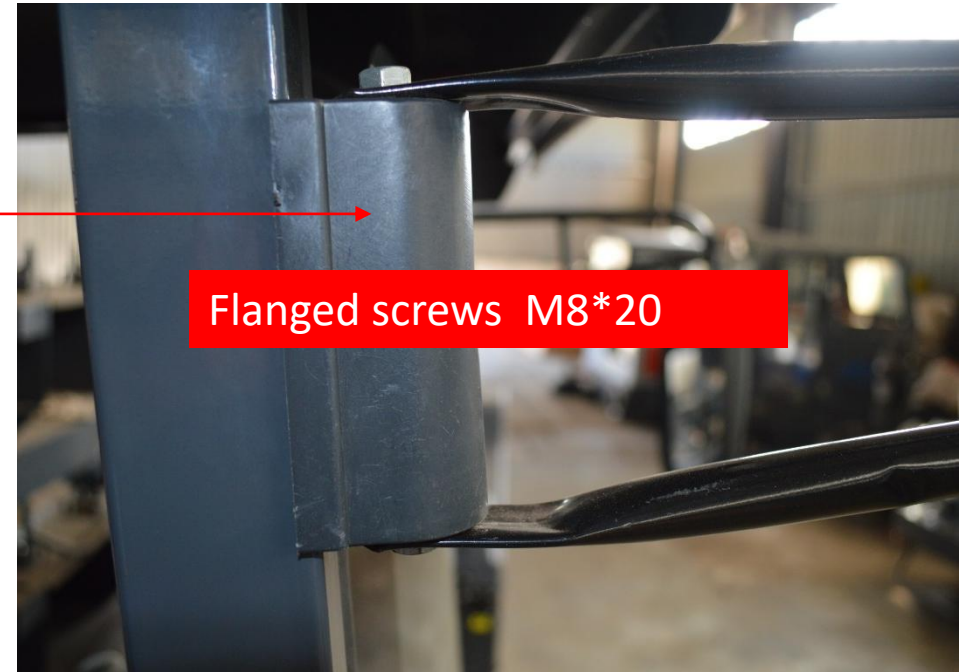
Flanged screws M6*12

STEP 8 Install the roof



Flanged screws M6*12

STEP 9 Install the reflector



Flanged screws M8*20

Installation complete

